

## History of BLHeliSuite Revisions

### Changes in 16.7.14.9.0.3:

#### General:

- Added support for BLHeli\_S MCU EFM8BB51, will show up as “A\_X\_... to Z\_X\_...”
- Adapted latest fixed BLHeli\_S Hex files (L\_H\_nn, L\_L\_nn, V\_H\_0 + V\_L\_0).
- Updated “SiUtil.dll” to rev 4.8.5. Includes now support for Support for EFM8BB51 MCU.

#### External 4way-Interfaces(Atmel/Arduino)

- Added support for BLHeli\_S MCU EFM8BB51 to the non 4way-interface.
- All interface boxes should be updated to rev. 16.5.0.1., all other interfaces to 20.0.0.6.

### Changes in 16.7.14.9.0.2a:

#### General:

- Added BLHeli\_S type “Z”.

### Changes in 16.7.14.9.0.2:

#### External 4way-Interface (Betaflight/et al.):

- Added workaround fix for flooding MSP port with MSP\_DISPLAYPORT under specific circumstances.

### Changes in 16.7.14.9.0.1:

#### General:

- Added BLHeli\_S type “W”.
- Improved info about found BLHeli 32 ESC and showing hint to use BLHeliSuite32.
- Fixed not showing more than the first ESC info in Silabs C2 4way-if “Found Multiple ESC configuration in SiLabs mode:” dialog

#### External 4way-Interfaces(Atmel/Arduino)

- Fixed bug timing bug in in BLHeli Bootloader 4way-interface Erase Flash command,
- All interface boxes should be updated to rev. 16.5.0.0., all other interfaces to 20.0.0.2.

### Changes in 16.7.14.9.0.0:

#### General:

- Added BLHeli\_S 16.7 hex files.
- Added BLHeli\_S type “V”
- Fixed bug: LEDs for BLHeli\_S type “Q” did not show up as parameter in Setup,
- Fixed: DShot beeper functionality clarification in the hint text did not show up for BLHeli\_S/“\_L” (EFM8BB10).

### Changes in 16.6.14.9.0.5:

#### General:

- Fixed bug introduced in v16.6.14.9.0.4: warning “!!!CAUTION!!! The flash file is of an unsupported revision...” showed up when flashing any BLHeli SiLabs or BLHeli\_S version <16.4.

### Changes in 16.6.14.9.0.4:

#### General:

- Renamed parameter “Beep Strength” to “Startup Beep Volume” and “Beacon Strength” to “Beacon/Signal Volume” and added functionality clarification in the hint text.
- Added support for 2 digit subversion numbering.

### Changes in 16.6.14.9.0.3:

#### General:

- Fixed: not recognizing com port, if registry entry contains non ansi characters.

### Changes in 16.6.14.9.0.2:

#### General:

- Added BLHeli\_S 16.6 hex files “T” and “U”.
- Fixed show up 1 instead of 3 led for BLHeli\_S 16.6 hex files “M”

## History of BLHeliSuite Revisions

### Changes in 16.6.14.9.0.1:

#### General:

- Added BLHeli\_S 16.6 hex files “R” and “S”.
- Removed extra warning, if flashing from deprecated version 16.3/14.7
- Screenshot function now works under Linux/Wine

#### External 4way-Interfaces(Cleanflight/Betaflight)

- Adapted MSP\_API level 1.33.

### Changes in 16.6.14.9.0.0:

#### General:

- Added BLHeli\_S 16.6 hex files.
- Added BLHeli Atmel and SiLabs 14.9 hex files.

#### BLHeli SiLabs:

- Removed revision 14.4 – 14.8 hex files for “Flycolor Fairy 30A” due to a FET timing bug only relevant for this ESC. The issue was introduced with BLHeli rev. 14.4 and caused excessive heat. Fixed in BLHeli revision 14.9.
- Added “Servoking Monster 70A Pro” ESC data.

### Changes in 16.5.14.8.0.2:

#### General

- Fixed: already plugged in HID devices not recognized at startup of the application.

### Changes in 16.5.14.8.0.1:

#### General

- Fixed EControllerError exception “Device cannot be identified.” on system with inaccessible HID devices (<https://github.com/bitdump/BLHeli/issues/199>).

### Changes in 16.5.14.8.0.0:

#### General

- Added BLHeli\_S 16.5 hex files.

### Changes in 16.4.14.8.0.1:

#### General

- Improved safety for upgrading BLHeli SiLabs 14.7/16.3 over bootloader. (doesn’t touch pseudo EEPROM section until all other flash parts are written).

### Changes in 16.4.14.8.0.0:

#### General

- Added BLHeli\_S 16.4 hex files.
- Added BLHeli Atmel and SiLabs 14.8 hex files.
- Excluding BLHeli SiLabs 14.7 and BLHeli\_S 16.3 from flash and configuration procedures. Also added hint, to upgrade to another revision.
- Better indication of found bootloader revision added.
- Improved Motor rpm calculator for MAIN Governor mode. Extended settable range for lipo cells.
- Added new ESC data:
  - Atmel
    - TBS Bulletproof 4A
    - TBS Bulletproof 30A

#### External 4way-Interfaces(MicroVector)

- Added support for Eagle Tree MicroVector FC 4way interface implementation (beta state).

#### External 4way-Interfaces(Cleanflight/Betaflight)

- Added higher baudrate options (beta state).

#### External 4way-Interfaces(Atmel/Arduino)

- Fixed bug in BLHeli Atmel ESC data.

## History of BLHeliSuite Revisions

- Excluding BLHeli SiLabs 14.7 and BLHeli\_S 16.3 from write configuration procedure over bootloader.
- Fixed bug in TAQX box, could not connect using servo-wire direct mode.
- Fixed compiled hex size did not fit for some small boxes into 7680 byte flash.
- All standalone boxes should be updated to rev. 16.4.0.0.

### Changes in 16.3.14.7.0.2:

#### General

- Rapid produced ESC are treated more gracefully.  
ESC's with unlisted revisions will now be examined to whether they appear in a next higher version in the list. Then it appears a warning, that the ESC probably has been flashed with a beta version.

#### External 4way-Interfaces(Cleanflight/Betaflight)

- Fixed a bug related to BLHeli\_S and FC board configured for multishot with fast looptime (8/8): On clicking "Disconnect" in BLHeliSuite, the active bootloader got commands, which erase the configuration page of the ESC flash (showed as "unknown or erase ESC" next time). With BLHeli\_S 16.3 the ESC no longer could be revived; it behaved like being locked for the bootloader.  
Added DeviceReset for SiLabs ESC before ESC target change and before "Disconnect" to restart (deactivate) bootloader.  
Added DeviceReset for Atmel ESC only before Disconnect to restart (exit) bootloader.
- Updated the list of know FC board targets.

### Changes in 16.3.14.7.0.1:

#### SiLabs BLHeli bootloader:

- updated rev sign "c" to "d" for BLHeli\_S 16.3 and BLHeli 14.7 hex files. No change in functionality.

### Changes in 16.3.14.7.0.0 :

#### General:

- Added BLHeli\_S 16.3 hex files.
- Added BLHeli Atmel and SiLabs 14.7 hex files.
- Added new ESC data:
  - Atmel
    - Htirc Dragonfly 6A/8A
    - Htirc Dragonfly 12A
    - Htirc Dragonfly 20A
    - Htirc Dragonfly 30A
    - Htirc Dragonfly 40A/80A
  - SiLabs
    - Htirc Hummingbird 12A
    - Htirc Hummingbird 20A
    - Htirc Hummingbird 30A Pro
    - Oversky MR-20A
    - Servoking Monster 30A Pro
    - Servoking Monster 80A

#### External 4way-Interfaces(Atmel/Arduino/Cleanflight/Betaflight)

- Fixed bug: Finding no ESC when using old "1-wire-passthrough-uart" (e.g. CF 1.12).  
MSP response with zero data length was recognized falsely as error.

#### External 4way-Interfaces(Atmel/Arduino)

- Added new BLHeli Atmel and SiLabs ESC data. Raised revision to 16.3.0.0. All standalone interface boxes should be updated to rev. 16.3.0.0.

### Changes in 16.2.14.6.0.1 :

#### General:

- Fixed minor bug: when writing the ESC flash verify failed and verify byte count < write byte count, a memory access exception occurred.

#### External 4way-Interfaces(Atmel/Arduino/Cleanflight/Betaflight)

- Fixed important bug: Whenever the first flash failed, an internal second flash attempt inevitably also failed. ESC flash memory and often the jump to bootloader got corrupted. (ESC permanent failed to connect over bootloader).

## History of BLHeliSuite Revisions

### Changes in 16.2.14.6.0.0 :

#### General:

- Added BLHeli\_S 16.2 hex files.
- Added BLHeli 14.6 for Servoking Monster 30A
- Added check box “Ignore inappropriate MCU” in Flash Assistant dialog; only enabled in Expert Mode and if connections is done over bootloader.
- Changed BLHeli\_S layout database handling to allow better recognition for ESC with beta firmware.
- Fixed Min/Max Throttle diff for BLHeli\_S to 140 (us).
- Added some check for invalid Min/Max Throttle parameter values.
- Fixed visibility bug of copy/past buttons in MultiESC arrangement.
- Replaced SiUtil.dll dynamic version against the static version to ensure all load does not fail, because of missing other MFC dll. Removed obsolete MFC dlls added in 16.1.14.6.0.0.
- Updated BLHeli supported...ESCs.pdf (Added SkyRC ESC's and Servoking Monster 30A).

#### External 4way-Interfaces(Atmel/Arduino)

- Servoking Monster 30A . Raised revision to 16.2.0.0.

### Changes in 16.1.14.6.0.0 :

#### General:

- Added BLHeli 14.6 Atmel and SiLabs hex files.
- Added BLHeli\_S 16.1 hex files.
- Added EMAX Lightning 20A/30A, Align MR25-15A and Flycolor Fairy V2 30A.
- Internally reworked parameter handling.
- Various design improvements, hints show default values.
- Changed PWM Throttle value displays from “1.000 ms” to “1000”.
- Added tab “ESC overview”, visible for MultipleESC configurations.
- Added MFC DLLs to ensure SiLabs C2 Toolstick will run even on systems not having MFC installed.
- BLHeli\_S: LED Control now only visible for ESC with LED hardware support.
- Now on “Write Setup” or “Flash” failure, it will be asked for immediate retry of the operation until success or “Abort” is selected. On abort, the former identified ESC layout info will be added to a BLHeliSuite\Error.txt file. Very useful for SiLabs based ESC, particularly BLHeli\_S.

Also for SiLabs ESC a special warning dialog is shown:

*“Write Setup section to/ESC Flash of a SiLabs ESC Failed!*

*This means: the ESC layout will no longer be identified automatically.*

*The layout information is:*

*ESC#1 - XX 12A - Rev. 14.6 - Multi*

*This information is also saved to ...\BLHeliSuite\Errors.txt*

*Please analyze the reason of failure and try to reflash the ESC using this information.”*

- Fixed bug: Application hang under WinXP and Wine on connect 4-way interface.
- Fixed bug: parameter “Brake On Stop” invisible, if first a BLHeli\_S setup is loaded and right afterwards a BLHeli >= 14.5 setup.
- Fixed “Save Setup to ini file” failed to overwrite existing old style files.

#### External 4way-Interfaces(Cleanflight):

- Optimized connection state detection for MultipleESC “Check”.
- Fixed minor bug in FC connection sequence (FC CLI mode check).
- Added new ESC calibration procedure in Motors tab.

#### External 4way-Interfaces(Atmel/Arduino)

- Improved connections to ESC with higher capacitance at input pin, by changing the bit read timing.
- Added wait time between connection attempts for SingleESC interfaces.
- All interfaces and interface boxes should be updated to rev. 16.1.0.0.

### Changes in 16.0.14.5.0.1 :

#### General:

- Fixed bug: parameter value 255 was falsely corrected to default when read.

### Changes in 16.0.14.5.0.0 :

#### General:

## History of BLHeliSuite Revisions

- BLHeliSuite revision numbering will have a new structure:  
**16.0.14.5.0.0** =>  
BLHeli\_S rev                   **16.0**  
BLHeli rev                   **14.5**  
BLHeliSuite sub rev       **0.0**

- Added BLHeli 14.5 Atmel and SiLabs hex files.
- Added BLHeli\_S 16.0 hex files.

### *External serial Interfaces:*

- Raised revision to 16.0.0.0. (no need to update from 14.4.0.5.).

### **Changes in Beta 14.4.0.5.8 :**

#### *General:*

- Fixed “Read MultipleESC Setup from ini file” failed, if no name was assigned for ESC.
- BLHeli 14.5 parameters now accessible without “Disable BLHeli Revision check”.

### **Changes in Beta 14.4.0.5.7 :**

#### *General:*

- Added “Save/Read MultipleESC Setup to/from ini file” capability in MultipleESC mode. (thanks for this useful idea, Chris!)

### *External serial Interfaces:*

- Fixed BLHeli\_S recognition for standalone boxes.
- All interface boxes should be updated to rev. 14.4.0.5..


### **Changes in Beta 14.4.0.5.6 :**

#### *BLHeli\_S:*

- Enabled “Bidirectional reversed” for Motor Direction.
- Updated “Programming by TX” enable state and hint.

### **Changes in Beta 14.4.0.5.5 :**

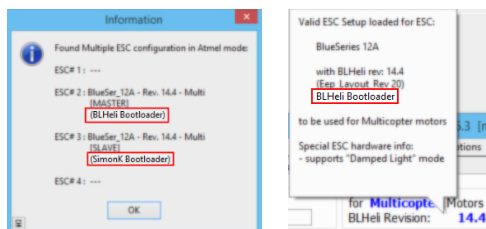
#### *BLHeli\_S:*

- Fixed failed to flash EFM8BB21 chip with interface “ SILABS BLHeli Bootloader (USB/COM)” due to wrong BufferSizeForData.

### **Changes in Beta 14.4.0.5.4 :**

#### *General:*

- Removed support for 4way-interfaces with protocol rev <6/106.
- Fixed minor bug in BLHeli\_S LED Control hint.
- Added status messages for the ESC connection mode



### *Cleanflight Interface:*

- Added store/restore settings for Special Tests dialog (FC/Motors tab).
- Fixed Application hang, when CF interface Special Tests dialog is active and USB plug is disconnected.

### **Changes in Beta 14.4.0.5.3 :**

#### *Cleanflight Interface:*

- Fixed bug in **14.4.0.5.2**: ESC#1 was not detected with 4way-if/CF BF on the first time “Check”.

#### *General:*

## History of BLHeliSuite Revisions

- Added new ESC “AIKON Boltlite 30A” and “RotorGeeks 20A Plus” (only database, no hex files yet).
- Further BLHeli\_S integration.

### *External serial Interfaces:*

- Adapted new ESC for standalone boxes.
- All interfaces and interface boxes should be updated to rev. 14.4.0.3.

### **Changes in Beta 14.4.0.5.2 :**

#### *Cleanflight Interface:*

- Fixed Application hang, when CF interface Motor tab is active and USB plug is disconnected.
- Improved handling of USB connection loss while *Read Setup* or *Check* on Setup tab.

#### *General:*

- Further BLHeli\_S integration.

### **Changes in Beta 14.4.0.5.1 :**

#### *Cleanflight Interface:*

- Implementation of 4way-interface

### **Changes in Beta 14.4.0.5 :**

#### *Cleanflight Interface:*

- Implementation of 1wire-pass-through-vcp

### **Changes in Beta 14.4.0.4 :**

#### *General:*

- Internal restructuring of parameter and the value control handling. This resolved long existing flicker issues of the UI.
- Fixed: missing error message, when external hex file read failed.
- In the flash assistant dialog now only those BLHeli hex files show up, which match the current detected MCU of the connected ESC.
- Added a warning message in the confirm flash dialog, to inform unexperienced users about the risk of flashing the wrong hex files to any ESC. Also added a security hint after the flash procedure on “removing propellers” and using “overcurrent protection” while testing the ESC.
- Added Support for ESC with SiLabs C8051F410 MCU.
- Updated “SiUtil.dll” to rev 4.7. Includes now support for Support for SiLabs EFM8BB10Fx and EFM8BB21Fx MCU.
- Added support for new Flight controller 1-wire-path-through (VCP and UART) implementations.

### **Changes in 14.4.0.3:**

#### *General:*

- Updated to latest BLHeli Rev14.4 Hex files ([Bugfix for latest commit, that broke OS125 detection](#)).

### **Changes in 14.4.0.2:**

#### *General:*

- Updated to latest BLHeli Rev14.4 Hex files.
- Added new ESC “DALRC XR20A“, “Flycolor Raptor 390 20A“, “Flycolor Raptor 20A“, “FVT Littlebee 20A Pro” and “TBS Cube 12A” hex resources and included the updated docs of BLHeli 14.4.

#### *External serial Interfaces:*

- Adapted new ESC for standalone boxes.
- Added 4way-if C2 and BLHeli bootloader Support for ESC with SiLabs C8051F410 MCU (rem: GUI support is still missing will follow in 14.4.0.3).
- All interfaces and interface boxes should be updated to rev. 14.4.0.2.
- Added missing notes in the “BLHeliSuite 4w-if protocol.pdf”.

### **Changes in 14.4.0.1:**

#### *General:*

- Fixed minor visibility bug in “Expert tools” tab. Some functions were disabled for interface “X Atmel ISP Interface”.

### **Changes in 14.4.0.0:**

## History of BLHeliSuite Revisions

### *General:*

- BLHeli Rev14.4 Hex files integrated.
- Added new ESC “DSY XM 20A”, “Oversky MR-20A Pro”, “ZTW Spider Pro 20A Premium” and “ZTW Spider Pro 30A HV” hex resources and included the docs of BLHeli 14.4.
- Added support for BLHeli bootloader at SiLabs EFM8BB10Fx and EFM8BB21Fx MCU.
- Some mine improvements and fixed typos.

### *External serial Interfaces:*

- Adapted new ESC for standalone boxes.
- Added bootloader support for SiLabs EFM8BB10Fx and EFM8BB21Fx MCU
- All interfaces and interface boxes should be updated to rev. 14.4.0.0.

### **Changes in 14.3.0.2:**

#### *General:*

- Added new ESC “ZTW Spider Lite 18A v2”, “FVT Littlebee 30A” and “ZTW Spider Pro 20A HV” hex resources and updated doc.
- General cleanup and rework of all flash over bootloader algorithms. Independent of the optimized reset vector set by the BLHeli firmware since rev. 14.3, the new algorithms now will ensure the accessibility of the bootloaders, even if the flash fails in a critical section. So, the chance to corrupt the jump to bootloader is minimized for all bootloaders where the fuses are not set for initial jump at reset (rem: SiLabs does not offer bootloader fuses).
- If flash fails in bootloader mode, now the ESC will stay intact and the ESC name is marked as “\*\*FLASH\*FAILED\*\*”. (Not valid for SiLabs C2 and Atmel ISP flash)
- Updated “BLHeli programming adapters.pdf” to match GUI outfit.
- Removed “Arduino Delay” option checkbox. Means: always wait 2 sec after first failed Arduino interface connection and retry once. No disadvantage found so far.
- Removed “Always Restart Target” option, manual “Restart ESC” is still usable for SiLabs C2 interfaces.
- Fixed: Cleanflight/Betaflight pass through did not find ESC, if FVT programming stick was plugged in simultaneously.
- Fixed parameter translation bug, where Governor Range was always set to “high”.
- Did some work to optimize the MultipleESC mode. For changes see the updated “BLHeliSuite MultipleESC mode.pdf”
- Improved support for Cleanflight/Betaflight FC in running in 3D Mode. REM: be always very careful, remove the props while testing Motors.
- Added an motor alternate speed test for Cleanflight/Betaflight FC. (Warning: for advanced users only, remove props!).
- Added Support for SiLabs EFM8BB10Fx and EFM8BB21Fx MCU
- A lot of minor improvement and changes in several details.

#### *SimonK bootloader:*

- Fixed SK Bootloader and added new hex resources to overcome an long known EEprom write bug. (see: *Changes in 13.2.0.0: Fixed issue: ESC with Simonk installed and having calibration data in EEprom failed to flash BLHeli in the first try (EEProm verify Error)*). Issue correctly was: ESC with Simonk installed and jumping from within the running firmware to the bootloader (100% if bootloader fuses are not set), the bootloader failed to write EEProm (see: <https://github.com/sim-tgy/pull/107>).

### *External serial Interfaces:*

- Adapted “ZTW Spider Lite 18A v2” for standalone boxes.
- Added C2 interface support for SiLabs EFM8BB21Fx MCU
- Fixed: “Gauai GE-183 18A” was falsely handled as damped light capable.
- All interfaces and interface boxes should be updated to rev. 14.3.0.2.

### **Changes in 14.3.0.1:**

#### *General:*

- BLHeli Rev14.3 Hex files integrated.

## History of BLHeliSuite Revisions

- Improved functionality with interfaces “E” and “6” to flash SiLabs and Atmel ESC with the Cleanflight “serial 1wire passthrough for BLHeli”. Now only the active ESC (e.g. 3 in a tricopter config) are accessible and accessed while “Check”.  
**Attention:** you need to flash the FC with the latest Cleanflight or Betaflight \*.hex (or \*.bin) compiled with “#define USE\_SERIAL\_1WIRE”.

### *External serial Interfaces:*

- Adapted ZTW Spider Pro 20A for standalone boxes.
- All interfaces and interface boxes should be updated to rev. 14.3.0.1.

### **Changes in 14.2.0.1:**

#### *General:*

- Changed verify flash option for 4way-interface/C2 to mandatory.
- Removed unnecessary double verify when flashing over 4way-interface/SK Bootloader.

### *External serial Interfaces:*

- Fixed bug: 4way-interface for BLHeli Bootloader flash procedure failed right after the start. All interfaces and interface boxes should be updated to rev. 14.2.0.1.

### **Changes in 14.2.0.0:**

#### *General:*

- BLHeli Rev14.2 Hex files integrated.
- Fixed timing issue with interfaces “E” and “6” to flash SiLabs and Atmel ESC with the Cleanflight “serial 1wire passthrough for BLHeli”.  
**Attention:** you need to flash the FC with the latest Cleanflight or Betaflight \*.hex (or \*.bin) compiled with “#define USE\_SERIAL\_1WIRE”.
- MultipleESC function now allows optional exclusion of “Motor Direction” and “Min/Center/Max Throttle” from Master-Slave synchronization. Check or uncheck sync in menu “Options... Sync...”. BLHeliSuite MultipleESC mode.pdf is now accessible from within help (“?”) menu.
- Did some code cleanup (to be continued...).
- “Make interface” tab sheet: “Make Arduino General” is now called “Arduino 4way-interface”.
- Added support for basic functionality under Linux/Wine (might be also OSX/Wine ). Please see “..\Manuals\BLHeliSuiteWine.pdf”.

### *External serial Interfaces:*

- Fixed bug: PC Interface with 4way-interfaces could not flash (erase) factory locked SiLabs C8051F850 ESC (Flycolor Fairy).
- Adapted new ESC for BLHeli rev. 14.2 for standalone boxes.
- All interfaces and interface boxes should be updated to rev. 14.2.0.0.

### **Changes in 14.1.0.3:**

#### *General:*

- ISP interface bug fixed: Could not read/write setup using ISP interface, while flashing worked.
- ISP interface: fixed panel visibility issues, occurred after switched to ISP from other interface.
- Fixed minor issue when comparing ESC flash against empty hex files.
- Updated SK Bootloader hex resources to the latest release  
<https://github.com/sim-/tgy/commit/073c6c49df0cbb21af9906d37745f0edd2fa8fdc#diff-4a736271fac5fcf1578da644663b8596> (“Commits on Aug 25, 2015 ,”). Also comments of the source file (SKBootloader.asm) are now updated.

### **Changes in 14.1.0.2:**

#### *General:*

- Fixed bug: Need to manually “Erase Chip” when flashing factory locked SiLabs ESC using “A SiLabs C2 (Toolstick)” interface.

### **Changes in 14.1.0.1:**

#### *General:*

- Fix a bug in early 14.1.0.0, where not locked SK bootloader was unintentionally erased when trying to flash with AFRO or Turnigy USBLinker or ArduinoUSBLinker.



## History of BLHeliSuite Revisions

### Changes in 14.1.0.0:

#### General:

- BLHeli Rev14.1 Hex files integrated.
- Fix: PWM output Dither value meanings where shown wrong
- Fix: somehow the feature for flashing Simonk got mangled.
- Added interfaces “E” and “6” to flash SiLabs and Atmel ESC with the Cleanflight “serial 1wire passthrough for BLHeli”.  
Note 1: One needs to flash the appropriate Cleanflight Firmware. The passthrough mode is only available for a few boards yet.  
Note 2: The passthrough will only work with ESC that have the BLHeli bootloader installed. For optimal results, be sure to use only the latest Bootloader (“c”) revision.  
For some kind of ESC eg. with pull down resistors at the input, additional pull up resistors might be required at the FC board outputs.  
(There is also a CLI mode for manually activate the passthrough mode, to deactivate/switch the FC must be manually rebooted. To use the CLI mode choose interface “C” or “1”. The CLI mode is only recommended for special testing purposes.)
- Added a “Motor” tab for Cleanflight to easily check Motor directions and throttle calibration on the fly.
- Reworked almost completely the MultipleESC function, removed some issues and added a lot improvements around the MultipleESC handling especially: overriding of Motor direction only when one ESC is selected in Single Mode, introducing a copy and paste...

#### External serial interface boxes:

- Fix: XP7/12/18/25A and all PolarisTdr...A were settable as “damped light” (but are not capable).
- Fix: “Low V Limit” falsely showed up for MULTI ESC.
- Added PWM output Dither value meanings for boxes with >8k flash space.
- Reworked source code partially and optimized the size.
- Fix: “B\_RBBXm88P8NoBeep” did not fit into flash space. Also added file size check before flash.
- The Robbe Box with Atmega88/not upgraded and beeper enabled is no longer restricted for SingleMode SilabsC2 (B\_RBBXm88P8) to BLheli minimum Rev. 4.0 (instead of 5.0).
- Adapted changes for BLHeli rev. 14.1 for standalone boxes
- All Interface boxes should be reflashed to v14.1.0.0.

### Changes in 14.0.0.3:

#### General:

- Added new SiLabs ESC layouts (Flycolor Fairy 6A and Favourite FVT Littlebee 20A).
- Added the ability to read and write hex files >64KB.

#### External serial Interfaces:

- Fixed : could not flash some Arduino Mega2560 boards (with updated Arduino bootloader).  
BLHeliSuite now uses always “-D” option (Disable auto erase for flash) when flashing any Arduino board with AVRdude, because the Arduino bootloader seems not to handle device erase command.
- Added new SiLabs ESC layouts (see above). Please reflash the 4-way Interfaces/Boxes as usual.

### Changes in 14.0.0.2:

#### General:

- Fix: Recompiled BLHeli Rev14.0 Hex files (13.07.2015) integrated.

### Changes in 14.0.0.1:

#### General:

- Fixed: could not read Setup with Atmel BLHeli bootloader with interface “1”.

### Changes in 14.0.0.0:

#### General:

- BLHeli Rev14.0 Hex files integrated.
- Fixed false error msg when writing to ESC using Disable BLHeli Revision check.
- Fixed automatic Atmel/SiLabs switching “C”<->“1”.
- Added support for SiLabs C8051F850/53/60/63.

#### External serial 4-way Interfaces/Boxes:

## History of BLHeliSuite Revisions

- Adapted changes for BLHeli rev. 14.0.0.0
- Fixed timeout and abort function in PC interface situations with BLHeli- and SK-bootloader.
- Reflash the 4-way Interfaces/Boxes as usual.

### Changes in 13.2.0.4:

#### General:

- Fixed issue: Selection of serial com port got very slow if Bluetooth devices were involved.

### Changes in 13.2.0.3:

#### General:

- Added automatic online checking for updates of BLHeliSuite. If a newer version is found, user can download and view this (History) file and/or allow to open the download page in the web browser. This feature is enabled by default and can be disabled (menu “options”). Manually check for updates is also possible in menu “?”.

#### External serial Interfaces:

- Fixed bug: cannot flash locked ESC in 4w-if SiLabs C2 mode.

### Changes in 13.2.0.2:

#### General:

- Recompiled BLHeli SiLabs Rev13.2 Hex files integrated. Includes new bootloader (BootMsg “471c”) with fix by Steffen for “No start” issue on valid Oneshot125 signal at power up; tested here with 500-900Hz update rate (2000µS-1111µS loop time). Caution: higher update rate than 900Hz will not work. BLHeli rev. 14 will possibly enable higher update rates.  
To use the new bootloader, it is necessary to reflash the ESC via a C2 Interface using BLHeliSuite 13.2.0.2.
- Changed Atmel BLHeli bootloader to rev 4 (BootMsg “471c”). Includes fix for “No start” issue on valid Oneshot125 signal at power up; tested here with 500-900Hz update rate (2000µS-1111µS loop time). Caution: higher update rate than 900Hz will not work.  
BLHeli rev. 14 will possibly enable higher update rates.  
Now Atmel BLHeli bootloader also fully supports “read flash” feature.  
To use the new bootloader, it is necessary to reflash the ESC via ISP using BLHeliSuite 13.2.0.2.
- The naming convention was changed from *BESC* to the much more commonly used term *ESC*. This might lead to slight confusions, but I hope on the long run, will serve increased clarity.  
The current BLHeliSuite is backward compatible and can read ini files with ESC settings written by older revisions, but older revision cannot read newer ini files. If needed, *ESC* can be change back to *BESC* in those files.  
Also the file for external ESC Layouts is now called ESC.cfg instead of Besc.cfg. If needed rename the files simply.
- Changed Atmel ISP flash dialog default selection to “update/reinstall” bootloader in order to obtain the bootloader actuality.
- Added verify BESC and automatic verify after flash for Atmel BLHeli bootloader.
- Added MD-RX62H hex files.
- Fixed bug in Memory view dialog, which did not allow saving files in non-comparative mode.
- Storing of com port settings similar for both BLHeli bootloader (com) interfaces.
- Added auto switch mode for 4w-if with BLHeli bootloader between SiLabs and Atmel and now also with SK bootloader.

#### External serial Interfaces:

- Fixed bug: PC Interface mode did not work with small standalone boxes (8K flash) (prefix “B\_TAQX”, “B\_TDLX”, “B\_RBBX”) SiLabs C2.
- Fixed wrong keyboard layout for TAQX box in13200.
- Update protocol to V6 for not switchable interfaces and v106 for full switchable Interfaces.  
Now “read flash” is supported for Atmel BLHeli bootloader through the interfaces.  
All Interfaces should be reflashed to v13.2.0.2.
- The Robbe Box with Atmega88/not upgraded and beeper enabled is now restricted for SingleMode SilabsC2 (B\_RBBXm88P8) to BLheli minimum Rev. 5.0 (instead of 4.0).

### Changes in 13.2.0.0:

#### General:

## History of BLHeliSuite Revisions

- Leaving the beta state....
- Restructured menus and interface selection logic  
Simonk/stk500v2 bootloader is now called SK bootloader.  
AVRRootloader is now called BLHeli bootloader.
- Fixed undo Eep\_Pgm\_Temp\_Prot\_Enable button did not show up.
- Added “Save Setup to EEPROM” feature for Atmel ESC.
- Added support for SiLabs BLHeli bootloader.
- Added support for FVT USB Link tool for SiLabs and Atmel BLHeli bootloader.  
To use FVT stick with Atmel the BLHeli Bootloader must be flashed with BLHeliSuite 13.2 or later.  
New Atmel BLHeli bootloader connects at 19200 baud fixed. To connect the new bootloader with older BLHeliSuite, you need to select 19200 baud.
- Changed the connection speed for Atmel BLHeli bootloader in BLHeliSuite to 19200 baud fixed.
- Added auto switch mode for BLHeli bootloader between SiLabs and Atmel.
- Fixed bug: Motor Timing control not visible in Rev. 12-12.2.

### *Atmel flashing over USB Linker:*

- Fixed bug in SK Bootloader (faulty chip erase).
- Fixed faulty chip erase behavior of the old SK Bootloader.
- Fixed issue: ESC with Simonk installed and having calibration data in EEPROM failed to flash BLHeli in the first try (EEPROM verify Error).
- Changed the connection speed for AFRO and Turnigy USB linker in BLHeliSuite to 9600 baud fixed.

### *External serial Interfaces:*

- Complete restructuring: Serial interfaces selection is shown as “4w-if” = 4-way Interfaces. Means one interface switchable for 4 different interface modes.
  - SiLabs C2 (Toolstick substitution) mode
  - Atmel BLHeli bootloader mode
  - SiLabs BLHeli Bootloader mode
  - Atmel SK Bootloader modeAll Boxes and interfaces should be updated!

## **Changes in 13.1.0.0 Beta:**

### *General:*

- BLHeli Rev13.1 Hex files integrated.
- Changes the way hex files are stored. Now all BLHeli files are stored in 2 separate library's.
- Fixed InitialDir behavior changed since Windows7.
- Internal changes in Fuses storage and handling.
- Optimized Screenshot procedure. Now initial folder is “BLHeliSuite\Screenshots”
- Fixed parameter translating bug. Parameters where not written, when user confirmed “...want to write current settings?” after flash.

### *Atmel flashing over ISP:*

- Fixed GPF, when trying to keep an empty bootloader of an erased ESC.
- Now the ATmega Fuse editor is as separate expert tool available - independent from the flash process.

### *External serial Interfaces for SiLabs:*

- Fixed bug in “Make Arduino General”: could not connect to Arduino Mega (ATmega2560).

### *External serial Boxes for Atmel:*

- Added new ESCs and lifted all Atmel Boxes revision numbers to v13.1.0.0. The standalone Interfaces for Atmel must be reflashed to work properly with BLHeli Rev 13.1.

## **Changes in 13.0.0.3 Beta:**

### *General:*

- Fixed bug in Shellexecute method for start forum links in the browser (Failed with “The file does not exist”).

## **Changes in 13.0.0.2 Beta:**

## History of BLHeliSuite Revisions

### *Atmel flashing over ISP:*

- Fix 2: Fuses could not be written when flashing a memory locked ESC.

### *External serial Interfaces/Boxes in general:*

- Fix: False “Rev. Error” shown.
- Lifted all Interface/Boxes revision numbers to v13.0.0.2. At least the standalone Interfaces must be reflashed to work with BLHeli Rev 13 (optional for PC-only-Interfaces).

### **Changes in 13.0.0.1 Beta:**

#### *General:*

- Changed “PWM Frequency” to “PWM Frequency/Damped” to let user easier find the Damped light feature setting.
- Started tidying up layout of the controls a bit (will be continued).
- Minor fixes as usual...

### *Atmel flashing over ISP:*

- Fix: While flashing, the lock byte was used as found, what caused an error message, when trying to flash a memory locked ESC. A manual edit of the Lock bits with the Fuses Editor was necessary.
- Enabled the possibility to write separate EEPROM files, so one can better flash Wii-ESC firmware config files.

### **Changes in 13.0.0.0 Beta:**

#### *General:*

- BLHeli Rev13.0 Hex files integrated.
- Changed BLHeli revision check behavior : Application will now assume that parameter handling remains the same, until Main rev. number or EEPROM layout number increases. In addition, revision check is now disabled when doing a flashing external files and it is possible to temporarily switch “Disable BLHeli Revision check” for parameter editing. This allows a looser handling of marginal changes in the firmware.
- Various minor fixed and improvements.

### *Atmel flashing over bootloader:*

- From now on the flash memory will be completely erased, to avoid negative side effects when using BLHeli bootloader (AVRRootloader).  
Background: SimonK firmware does jump at run time to a fixed SK-bootloader start address (0x1C00/#7168) and tries to check the presents of the bootloader (flash not empty = <0xFF). It may happen that 0x1C00 is occupied, if BLHeli MAIN was flashed before.  
BTW: while flashing with ISP, the whole flash memory is always erased completely (set to 0xFF).
- Added recompiled Atmel hex files of rev. 11.2-12.2 using new code which fixes the “unprogrammed bootloader fuse” issue. For most internal linked hex files, the fix could be applied, but unfortunately - because of lack of space - not for AFRO MULTI rev. 12.0-12.2. User will be warned appropriately with an extra warning, if trying to flash unfixed BLHeli <13.0 over SK bootloader.  
Background for “unprogrammed bootloader fuse” issue: Perhaps the bootloader was flashed before together with SimonK Firmware without setting the bootloader fuses, which cannot be verified. After a flash with BLHeli without enabled bootloader fuses, one would no longer be able to connect through the bootloader. Then a renewed flash via the ISP interface (with writing the appropriate fuses) must be done to override the fuses and clear the situation.  
In BLHeli Rev 13.0 already a different functionality is used to overcome this issue.

### *Atmel flashing over ISP:*

- While flashing non BLHeli firmware, now the fuse bytes will be used as found while reading out. Only the bits for using of the bootloader will be changed.  
Only flashing BLHeli will override the fuses with the values shown in BESC.cfg.
- A newly added comprehensive Fuse-Editor for Atmega8-328 can be used to alter fuses individually. Critical security changes are blocked to prevent unwanted making the MCU un-programmable.
- User will be warned if clock related fuse changes could lead to un-programmable BESC.  
Background: SimonK supports BESC using internal rc-oscillator as clock source. So flashing those BESC with fuses set to use crystal/resonator oscillator as clock source would make them inaccessible

## History of BLHeliSuite Revisions

after the next reset.

Whereas BLHeli only supports crystal/resonator oscillator as clock source and will not work with clock source set to internal RC-oscillator.

Also various warnings are implemented when using otherwise suspiciously inadequate fuse settings.

- New ISP interface bit clock handling, improves connections to Atmega with slow clock settings (e.g. when set to factory default internal RC-oscillator (e.g. replacement of MCU).

*SiLabs external small serial standalone Boxes with servo plug:*

- Fixed a very rare bug producing error message when full flashing SiLabs Turnigy Plush 10,12... (caused by echoes while using Atmega UART buffer structure with 1-Wire for sending and receiving data).

*External serial Interfaces/Boxes in general:*

- Adapted changes for BLHeli rev. 13.0.
- Lifted all Interface/Boxes revision numbers to v13.0.0.0. At least the standalone Interfaces must be reflashed to work with BLHeli Rev 13 (optional for PC-only-Interfaces).

### Changes in 12.2.0.0 Beta:

*General:*

- BLHeli Rev12.2 Hex files integrated.
- Various minor fixed and improvements

*Atmel ISP flashing:*

- Changed BLHeli bootloader (AVRRootloader) to wait as long as the signal input stays logical high. This improves connection handling with BLHeliSuite and/or standalone interface boxes. It also facilitates the planned implementation of a multiple BESC handling, as it already done for SiLabs based BESC.

*Atmel external serial Interfaces/Boxes:*

- Changed “1” and “1s” prefixed interface/box firmware to connect to the changed BLHeli bootloader (AVRRootloader). Please update these boxes/interfaces to rev 12.1.0.2.

### Changes in 12.1.0.1 Beta:

- Improved error messages for ArduinoUSBLinker handling.

### Changes in 12.1.0.0 Beta:

*General:*

- BLHeli Rev12.1 Hex files integrated.
- Fixed: Checking for Acrobat Reader >= 11.0.07 for <Win8 did not work
- Fix for Multistar 45A was not recognized as damped enabled

*Atmel ISP flashing:*

- efuse is now shown like in AVRStudio (unused bits shown as defaulted to 1). E.g. for YEP-7A now is shown **0xFC** instead of **0x04**.

*External serial Interfaces/Boxes in general:*

- Changed serial protocol to Rev. 5. Now interface revision is shown as 5 digits (e.g. 12.1.0.1).
- Changed lib for Arduino LCD4884 to LCD4884s.rar provided by DFRobot/SaintSmart. Reduces code size.

*Small (non Arduino) standalone boxes:*

- Added firmware for the small (non Arduino) standalone boxes to connect direct over Servo cable plug in with SK and BLHeli Bootloader. Also provided Bootloaders Rev 02 with reduced timeout (optional to ensure startup connect stability)
- fixed always reading hfuse as 0 at Atmega168.

### Changes in 12.0.0.3 Beta:

- Afro/Arduino/USBLinker Interface: several minor bug fixes.

## History of BLHeliSuite Revisions

- ATMEL Bootloader Interfaces: Several optimizations for reading and writing partial locked BESC's (like AFRO's).
- Optimized Dropped Drag and Drop handling for ini and hex /eep files for Windows 8 . Known Issue: Doesn't work, if BLHeliSuite and explorer are running with different admin rights.
- Modified BLHeli Atmel for working with partial locked BESC's .

### Changes in 12.0.0.2 Beta:

- Minor bug fix: wrong value translation and default value for TAIL PWM Frequency was shown.
- Removed BLHeli Rev 12.0 TAIL Firmware.

### Changes in 12.0.0.1 Beta:

#### *External serial Interfaces/Boxes in general:*

- Bugfix: Damped light enabled was twisted. Damped light was enabled for not damped capable ESC but disabled for damped capable ESC.

### Changes in 12.0.0.0 Beta:

#### *General:*

- BLHeli Rev12 Hex files integrated.
- Checking for Acrobat Reader >= 11.0.07 ; no fix anymore needed. (info -> "Changes in 11.0.0.0")
- Increased start up speed a lot by using precompiled lists for internal Hex resources.
- Added *Undo* and *Default* buttons to *Misc* group ("Programming by TX", "Rearming every Start").

#### *Improvements:*

- Added direct support for „Afro USB“, „Turnigy USBLinker“, „ArduinoUSBLinker“, and other sticks for stk500v2 bootloader. Reading and Writing the configuration is quite fast now. „ArduinoUSBLinker“ is supported specially (as a separate menu item), what enables auto baudrate setting up to 921600 baud.
- Added "Verify flash Memory" for all AVR BESC's (even useful for SK BESC's).
- Added "Identify BESC" against external original hex file folders for all AVR BESC's (very useful for SK or unknown BESC's). External files as reference are supported as well.
- Improved AVRdude execution abort procedure.
- Replaced naming "AVR" with "Atmel" in the hope of getting more clearness into Brand selection. Also changed some titles of tabs and menus...
- Added support for flashing external SimonK hex files ("Flash Other") with all Atmel Interfaces (incl. 1-Wire Interface). SK files can be merged with 1-Wire bootloader (AVRRootloader). Please stay with the naming conventions for the SK hex files.
- Added precompiled SK Bootloader files, which can be merged for every thinkable BLHeli and SK BESC (incl. YEP7A). Remark: the most MAIN hex of BLheli Atmel Rev.12 for Atemega8 will not fit with SimonK Bootloader into left available space / TAIL and MULTI fit all. So for most MAIN hex the AVRRootloader should be chosen.
- Added detailed Fuse handling with automatic setting (and optional manual) for various bootloader options for flashing with 6-Pin ISP Interfaces (like USBasp ...).

#### *Small BLHeliSuite Boxes (Robbe, Turnigy Aquastar and Dlux) and Atmega8:*

- Integrated support for first time initial ISP 6-Pin flash with bootloader and firmware at once.

#### *External serial Interfaces/Boxes in general:*

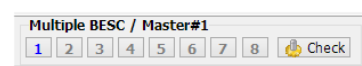
- Standalone Boxes: Started to add support for BLHeli and SimonK Bootloader (AVRRootloader and STK500v2) for Atmel based BESC's.  
Lifted all revision numbers to v12. At least the standalone Interfaces must be reflashed to work with BLHeli Rev 12 (optional for PC-Interfaces).

#### *Bug fix Atmel:*

- Changes the used AVRdude revision from 6.1 back to 5.11.1 , seems better support certain interfaces. (e.g. mySmartUSB Light had EEprom issues with 6.1) . Also 5.11.1 seems to be faster (e.g. with the stk500v2 bootloader sticks).

#### *Bug fix SiLabs Serial Interface mode for Multiple BESC:*

- Fixed visibility issue of "Multiple BESC" indication/selection bar



## History of BLHeliSuite Revisions

### *ArduinoISP:*

- Recognition of the target MCU signature added. The ArduinoISP now automatically switches for the ATmega8 to EEPROM byte aligned access.  
Please be sure to reflash ArduinoISP using "Make ArduinoISP" (ArduinoISP04m5)!

### *Bug fix list of serial ports:*

- COM1 was listed as COM1x if ports  $\geq 10$  were available in system.

### *Bug fix Read Setup from Ini file:*

- Fixed missing SiLabs/Atmel recognition of the ini file data. Did not read Startup\_Method, Startup\_Rpm and Startup\_Accel for SiLabs based ini data.

### *Known Issues:*

- Needs several seconds for initial scan (and after system device changes) of serial ports on systems with Bluetooth serial Interfaces.

### **Changes in 11.2.0.7:**

#### **Atmel:**

#### *Improvements:*

- Added support for „Make“ and setup of ArduinoUSBLinker including auto baud adjustment for using with the SK Bootloader.
- Added basic “Flash any file” in Expert mode on the “Setup” tab.
- Settings will now be saved for any AVR Dude programmer individually.

#### *Bug fix:*

- Changed the connection procedure with AVR Dude
- Changed writing to EEPROM as block without gaps to avoid AVR Dude issues.

### **Changes in 11.2.0.6:**

#### **Atmel:**

#### *Bug fix:*

- No connection w/o error message when trying to make Arduino 1-Wire or ISP interface
- Minor fix in bootloader for ATmega168(PA) 8Mhz (not used yet).

### **Changes in 11.2.0.5:**

#### **Atmel:**

#### *Bug fix:*

- Error Messages when changed ESC without restarting the suite
- Minor fixes here and there as well as several improvements
- Disabled alternative bootloader port PB4 for YEP 7A

### **Changes in 11.2.0.4:**

#### **Atmel:**

#### *Bug fix:*

- Changed device recognition...

### **Changes in 11.2.0.3:**

#### **Atmel:**

## History of BLHeliSuite Revisions

### *Bug fix:*

- AVRdude command line missed quotation marks when using Arduino or ArduinoISP. Failure on BLHeliSuite folder path containing spaces.

### **Changes in 11.2.0.2:**

#### **Atmel:**

### *Bug fix:*

- Several minor fixes.

### *Improvements:*

- Added a wider range of different bootloaders to support new input pins and ATmega168.

### *AVR ISP Interfaces:*

- Bugfix: ArduinoISP boards with Arduino-bootloader speed at 19200 baud did connect to the onboard MCU instead of the ESC MCU. ISP Interface speed now is set to 9600 baud. Please “Make ArduinoISP Programmer” for these boards again with BLHeliSuite 11.2.0.2.
- ArduinoISP now uses a special “Arduino.conf” for AVRdude to be able to connect to ATmega168 MCU (YEP 7A...)
- ISP flash now respects already installed bootloader and will allow to merge it into the new full flash. If the bootloader was locked it will be locked again.
- The flashed BLHeli bootloader (AVRrootloader) now will be locked to prevent unintentional overrides.

### *Added BESEC's:*

- BlueSeries 12A
- RCTimer NFS 30A
- RCTimer 40A
- Afro 12A
- Afro 20A
- Afro 30A
- YEP 7A

### **Changes in 11.2.0.1:**

#### **Atmel:**

### *Bug fix:*

- Visibility error in confirm flash dialog window: No details are shown, if no further warnings.

### *Serial 1-Wire Interfaces:*

- Added Support for STK500 bootloader (USBLINK/Afro ESC). This may help to test BLHeli on the fly on ESC with already installed bootloader. The bootloader is not supported for initial Flash.

#### **SiLabs:**

### *BESEC's:*

- Removed Skywalker 12A (it uses Turnigy Plush 12A)

### **11.2.0.0: Initial Release of BLHeliSuite**

BLHeli-Setup 11.2.0.1 is now renamed in BLHeliSuite and integrates all Procedures for flash and configuration of BLHeli Atmel ESC as well as it inherits the complete functionality of BLHeli-Setup 11.2.0.1 for SiLabs.

#### **Atmel:**

- BLHeli Atmel 11.2 Hex files integrated.



## History of BLHeliSuite Revisions

### *Interfaces:*

- ISP-Interfaces over AVRdude for the initial flash with BLHeli using the 6-wire Atmel ISP interface.
- Usb/serial 1-Wire type interfaces are able to connect over the servo cable or a additional 2 pin plug .  
The required Bootloader (AVRRootloader) will be written to the ESC with the initial flash with BLHeli over the ISP Interface.

### *BESC's:*

- BlueSeries 20A
- BlueSeries 30A
- BlueSeries 40A
- HobbyKing UBEC 20A
- HobbyKing UBEC 30A
- HobbyKing UBEC 40A
- Supersimple 18
- Supersimple 20
- Supersimple 30
- Supersimple 40
- Multistar 15A
- Multistar 20A
- Multistar 30A
- Multistar 45A
- Sunrise HiMulti 20A
- Sunrise HiMulti 30A
- Sunrise HiMulti 40A

### **SiLabs:**

### *Improvements:*

- Added official support for external hex files in subfolder: "BLHeli\_HexFiles\".

### BESC's:

- Align RCE-BL15P 15A
- Align RCE-BL15X 15A
- Align RCE-BL35P 35A
- Align RCE-BL35X 35A
- EAZY 3A v2
- Gaii GE-183 18A
- HiModel Cool 22A
- HiModel Cool 33A
- HiModel Cool 41A
- HobbyKing 10A
- HobbyKing 20A
- HobbyKing 35A
- HobbyKing 50A
- Flyfun 40A OPTO (FW: Turnigy Plush 40A)
- FVT SKYIII 30A
- Origin 10A (FW: XP-7A)
- Origin double (FW: XP-7A/DP-3A)
- Platinum Pro 30A
- Polaris Thunder 12A
- Polaris Thunder 20A
- Polaris Thunder 30A
- Polaris Thunder 40A
- Polaris Thunder 60A
- Polaris Thunder 80A
- Polaris Thunder 100A
- RCTimer 6A
- Skywalker 12A

## History of BLHeliSuite Revisions

- Skywalker 20A
- Skywalker 40A
- Skywalker Quattro 20A (FW: 4 x Skywalker 20A ESC)
- SuperMicro 3.5A
- Tarot double 30A
- Turnigy DP 3A
- Turnigy AE 20A
- Turnigy AE 25A
- Turnigy AE 30A
- Turnigy AE 45A
- Turnigy KForce 40A
- Turnigy KForce 70A HV
- Turnigy KForce 120A HV
- Turnigy K-Force 120A HV v2
- Turnigy Plush 6A
- Turnigy Plush 10A
- Turnigy Plush 12A
- Turnigy Plush 18A
- Turnigy Plush 25A
- Turnigy Plush 30A
- Turnigy Plush 40A
- Turnigy Plush 60A
- Turnigy Plush 80A
- Turnigy Plush Nfet 18A
- Turnigy Plush Nfet 25A
- Turnigy Plush Nfet 30A
- XP-3A
- XP-7A
- XP-12A
- XP-18A
- XP-25A
- XP-35A SW

### Old BLHeli-Setup history

---

#### Changes in 11.2.0.1:

##### *Bug fix:*

- “Write Setup” was enabled even when there was no valid parameter set loaded.

##### *Serial Interfaces:*

- Added Firmware for Turnigy Delux Box with new keyboard layout (**L**eft - **U**p - **D**own - **R**ight ). Old was L-U-R-D.
- Added bootloader hex files for all small ATmega boxes for future upgrade with ATmega168/328 MCU.

#### Changes in 11.2.0.0:

BLHeli 11.2 Hex files added.

##### *Bug fix:*

- Minor Bug in Parameter translation.

##### *Serial Interfaces:*

- Adapted new Beacon Delay values
- Raised all serial interface revision numbers to V112. Update is optional but recommended for correct beacon delay parameter display.
- The small Boxes now running out of space (Robbebox with beeper at least.... Next bigger update will need a MCU upgrade to 16Kbyte ATmega168... )

#### Changes in 11.1.0.1:

##### *Bug fix:*

- “Read Setup from ini file” did not work.

# History of BLHeliSuite Revisions

## Changes in 11.1.0.0:

BLHeli 11.1 Hex files added

### Bug fix:

- Toolstick Interface: Workaround for SiLabs Toolstick Interface hanging sometimes when disabled dll error dialogs. Known limitation: On connect error, 2 message dialogs show up (one from dll, one from application).
- Toolstick Interface: fixed exception when started with missing SiLabs.dll.
- Fixed: Governor Target calculator was not updated automatically after "Read Setup"

### Improvements:

- Disable overlapping hint-window for Governor Target slider, when changing the value.
- Added an individual list of favorites, to optionally limit the listed BESC's, if a brand-new BESC will be flashed.
- SumatraPDF.exe is now supported as alternative PDF-Viewer. To use it instead of other PDF readers, please download the portable version from "<http://blog.kowalczyk.info/software/sumatrapdf/download-free-pdf-viewer.html>" and simply copy the single "SumatraPDF.exe" into the "BLHeli-Setup\Manuals" directory.
- Added check/warning for MCU unsuitable for the hex file, before flash.
- Added verification procedure for target BESC against the original hex file, to simplify corruption checking of the flash-memory.
- Added an option "save a Screenshot to file" for most of the application windows. (\*.png or \*.bmp).
- Added LED-like symbols to indicate **READ** and **WRITE** operations at the Interface/ BESC connection.
- A lot visible and invisible restructuring...

### Added BESC's:

- FVT SKYIII 30A
- Skywalker 12A
- Turnigy KForce 70A HV
- Turnigy Plush Nfet 18A
- Turnigy Plush Nfet 25A
- Turnigy Plush Nfet 30A
- XP-35A SW

### Serial Interfaces:

- Defused C2Data line checking to support unfavorable conditions on the C2D line.  
<http://www.rcgroups.com/forums/showthread.php?t=1686498&page=48#post26922573>
- Raised all serial interface revision numbers to V111. Update is optional but recommended for at least all standalone Interface boxes to support the new BESC ...  
Update of the firmware may also help, if connection errors occur with the error message: "C2D line low."

## Changes in 11.0.0.0:

BLHeli 11.0 Hex files added and adapted parameter handling.

### Bug fix:

- Supermicro 3.5A BESC was not recognized as damped mode enabled (UI only).
- UI did not inform correct on write error in seldom situation after connection got lost
- Fixed timing issue in Bootloader UI for 2-wire serial Interfaces
- Added workaround for starting Adobe Acrobat Reader XI in protected mode (sandbox) mode using ShellExecuteEx under Windows 8(1). Info: <http://blogs.adobe.com/asset/2010/07/introducing-adobe-reader-protected-mode.html>
- Various minor fixes of the UI.

### Improvements:

- Added Parameter Import/transformation between all different Revisions (2.4 <-> 11).
- Added Simple Design option in UI.
- Added background colour option in UI.
- Added extended BESC info into popup window, dropped "at max. Xs Lipo" info. Please consider manufacturers data or "BLHeli supported SiLabs ESCs.pdf" for further info.
- Improvements in BESC recognition procedures.
- BLHeli Revision now will be written to Setup.ini files in addition.
- General improvements as well ....

### Added BESC's:

- Tarot double 30A

### Serial Interfaces:

- Fix in Pinout Documentation: Pinout Arduino UNO w. 1602 LCD Shield: D2<->D3 was twisted (only in Docu)
- Sorted the list of BLHeli parameters in the Firmware for to match the pdf manual
- Improved C2CK Line checking for Multi BESC interfaces, to deal with higher capacitive loads.
- Raised all serial interface revision numbers to V110. Please reflash at least all standalone Interface boxes ...

## Changes in 10.4.0.3:

### Bug fix:

## History of BLHeliSuite Revisions

Multi BESC Mode: Button “Check” updated disconnected ESC not correctly.

### *Improvements:*

- “Enable Log” and “Expert mode” options are now independent.
- “Ignore” Button in Flash Assistant dialog is now called “Ignore the list, pick a file....” and is now visible in every mode (normal and “Expert”).

### *Added BESC's:*

- Turnigy K-Force 120A HV v2
- EAZY 3A v2

### *Toolstick Interface:*

- SiLabs DLL changed from Version 4.10 to 4.21. The Stick firmware will be updated on first connect automatically from Rev. 3.1 to 3.4.

### *Serial Interfaces:*

- Bug fix: Bug: GE-183 18A was handled as fully damped / Platinum Pro 30A was handled as not fully damped.
- Bug fix: Failed to flash Platinum Pro OPTO (MCU C8051F390)
- Updated serial protocol revision to V4 for all Interfaces.
- Raised all Interface Revision numbers to V105.
- Optimized Timing again (decreased speed a bit, solid timing)
- C2 Interface : Additional line state checking before connecting.

### **Changes in 10.4.0.0:**

BLHeli 10.4 Hex files added.

### *Added BESC's:*

- Gaui GE-183 18A
- Platinum Pro 30A
- Polaris Thunder 12A
- Polaris Thunder 20A
- Polaris Thunder 30A
- Polaris Thunder 40A
- Polaris Thunder 60A
- Polaris Thunder 80A
- Polaris Thunder 100A

### *Serial Interfaces:*

Updated serial protocol revision to V3 for Multiple-BESC Interfaces.

Raised all Interface Revision numbers to V104.

Optimized Timing (increased speed/higher timeouts)

### **Changes in 10.3.0.1:**

Fixed misalignment of controls when using windows magnifier.

### **Changes in 10.3.0.0:**

BLHeli 10.3 Hex files added.

### *Added BESC's:*

- Align RCE-BL15P
- HobbyKing 20A
- HobbyKing 35A
- HobbyKing 50A

Please reflash the Arduino/AT-Mega based serial programming boxes to "...103.hex".

Fixed: Eep\_Pgm\_BEC\_Voltage\_High failed to load from ini File.

Fixed: USB Toolstick detection failure when running on certain tablett pc's.

### **Changes in 10.2.0.1:**

Cheated version of BLHeli 10.2 Hex.

Please reflash with this 10.2 Rev if You use Turnigy AE, the Align RCE-BL35P or the newly added Align RC-BLn5X.

Also Please reflash the Arduino/AT-Mega based serial programming boxes (added Align RC-BLn5X).

### *Added BESC's:*

- Align RCE-BL15X 15A
- Align RCE-BL35X 35A

### **Changes in 10.2.0.0:**

BLHeli 10.2 Hex files added.

### *Added BESC's*

- Align RCE-BL35P 35A

# History of BLHeliSuite Revisions

- HobbyKing 10A

## Changes in 10.1.0.0:

BLHeli 10.1 Hex files added.

### Motor Calculator:

Minor enhancement enables entering 3 digit Main Gear teeth easy.

## Changes in 10.0.0.0:

BLHeli 10.0 Hex files added.

Adapted the additional parameters from BLHeli.

### Added ESC's

- Turnigy KForce 40A
- Turnigy KForce 120A HV

### Motor Calculator:

GOV target now shows also the target rpm in relation to the motor capabilities as percentage value.

Added new Combo-box for individual compensation factor (% Value) for Lipo voltage drop and Motor KV drop under load. Default is 81% (former procedure assumed 3.8V/s @90% KV drop ->81.43%).

Hassle free update of old Motor data included.

Flash Dialog reworked in parts. Now selection of fitting flash-file is even more comfortable.

### Serial Interfaces handling:

Added the capability to flash BESC's in arrangements from 1 up to 8 BESC.

### Serial Interfaces:

Integrated Multiple-BESC capabilities in the Arduino Interfaces and Boxes.

Updated serial protocol revision to V2 for Multiple-BESC Interfaces.

Raised all Interface Revision numbers to V10.

Added a Arduino Uno based box with a LCD4884 Shield.

Added an Atmega168 upgrade option to the small boxes (Robbe, TDLX, TAQX) to give room for Multiple-BESC capabilities. The small Box will handle up to 5 or 6 BESC's at once (Still Tests are needed).

Several changes in the serial Interface firmware to reduce size and efficiency.

BLHeli Manuals ("BLHeli programming by TX "/" Governor SiLabs High and Low.xls") are now included and accessed local for easier and faster handling. Because information about supported BESC may change more frequent, "BLHeli supported SiLabs ESCs" is not included, but will be downloaded on access through "BLHeli-Info" menu. (btw: if you store the file as "BLHeli supported SiLabs ESCs.pdf" in the Application path, it will be loaded from there).

### All in all:

Some minor general improvements of the UI.

Some bug-fixes too, of course...

## Changes in 9.4.0.0:

BLHeli 9.4 Hex files added.

Changed MCU memory recognition procedure again; now hopefully more bullet-proof.

Fixed a small bug in GOV target Motor calculator.

GOV target color now indicates

- ➔ Headroom >15% = green
- ➔ Headroom <15% = blue
- ➔ Headroom 0% = red

Some minor improvements in UI.

## Changes in 9.3.0.3:

Fix only relevant for BESC C8051F312 MCU's (so eventually Turnigy 45AE, Turnigy Plush 40A (HW 40A Opto). The Lock byte could not be read out, so "Read Setup" stopped with "Invalid argument." Error.

The Firmware of the serial boxes now accept also DeviceID = 0x09.

## Changes in 9.3.0.2:

Finally fixed in 9.3 reinvented bug: "Device cannot be opened" Exception in Toolstick Interface mode, when disconnected.

## Changes in 9.3.0.1:

Try to fix in 9.3 reinvented bug: "Device cannot be opened" Exception in Toolstick Interface mode, when disconnected.

## Changes in 9.3:

BLHeli 9.3 Hex files added.

Changed Ppm\_Max\_Throttle max. value to 255, Ppm\_Min\_Throttle max. value to 125.

Improved Desktop for the Parameters:

- Changed functional sort order of the parameters.
- Changed Outfit to a more modern style.
- Improved visual indication for Default and Undo buttons.

# History of BLHeliSuite Revisions

- Minor bug fix: parameter visibility in prior BLHeli versions.

Fixes:

- Improved Error handling when unplugging BESC while serial interface is connected to PC.

Updated Firmware for all the serial/usb Box interfaces.

- Improved Error handling when unplugging BESC while interface is connected to PC.
- Improved for smaller code size.
- Added Firmware for the serial/usb Box interface "Turnigy AquaStar Water Cooled ESC Program Box" (TAQX Box)

## Changes in 9.2:

Exchanged BLHeli 9.0 against fixed 9.1 hex files.

Added Firmware for the serial/usb Box interfaces to ignore Bug in BLHeli 9.0.  
(RBBX Box V6 / TDLX Box V3 / Arduino Uno w. Shield V3)

Added BLHeli 9.2 Hex files.

Adapted defaults for Beacon Delay.

## Changes in 9.0.0.4:

Integrated Governor Range mode "low" into Governor Target head speed calculations.

## Changes in 9.0.0.3:

Fixed: Any click on any "Default button" sets also "Startup Method" to default.

Fixed: Exception occur when delete all text from Motor-Setup-Name combobox.

Increased the window size a bit, so the scrollbars not always show when using "non classic Windows style".

## Changes in 9.0.0.2:

fixed: Eep\_Pgm\_Gov\_Setup\_Target not re-read from Ini-file

fixed: Gov\_Gain Default-Indicators got mixed up in certain conditions.

Improved "Motor-Gear Setup" handling.

## Changes in 9.0.0.1:

fixed: "Device cannot be opened" Exception in Toolstick Interface mode, when disconnected.

## Changes in 9.0:

fixed: Startup\_Power greyed out when Startup\_Method=direct. (Thanks Steffen)

Some improvements for serial solutions.

Adaptation to BLHeli 9.0 including new revisions for the serial BLHeli-Setup-Boxes (RBBX,TDLX and Arduino UNO).

Added Bootloader for ATmega8 solution.

## Changes in 8.0.0.2:

Improved handling of unflashed (partially locked) BESC

## Changes in 8.0.0.1:

RBBX Firmware V3 included (size optimised)

Improved check for future BLHeli Revision.

Fixed a wrong error message after successful serial verify.

Minor improvements

## Changes in 8.0:

Interface section reworked in all parts.

Includes now support for serial interfaces:

- A small BLHeliBox for field programming as dual mode Interface
- An AVR based stick (ARDUINO Nano) Interface
- A simple AVR chip (ATMEGA8) Interface

added ESC's

- RCTimer 6A
- Turnigy AE 45A
- Turnigy Plush 40A
- Turnigy Plush 60A
- Turnigy Plush 80A

## Changes in 7.0.0.1 Beta::

added ESC's

- HiModel Cool 22A
- HiModel Cool 33A
- HiModel Cool 41AA

A lot work on details still under work...

Please be patient, as I'm restructuring the Toolstick interface section heavily...

## Changes in 7.0 Beta:

A lot work on details still under work...

## Changes in 6.11:

## History of BLHeliSuite Revisions

fixed: Toolstick interface was not disconnected after read.  
Added several helpful links (to BLHeli Manuals (pdf), source code...).

### Changes in 6.1:

Added 6.1 hex files  
Prepared for serial interface (Robbe-Box etc.)

### Changes in 6.0:

fixed: Bug in Reading Ini-Files of Layout Rev >10

### Changes in 5.0.2:

fixed: "Low voltage Limiter" was not shown for "MULTI"  
Minor change: "Startup RPM" hints to "1=0.67 2=0.80"

### Changes in 5.0.1:

fixed: While writing back the Setup, ESC layout and BLHeli ID strings where not aligned to 16 char. Did no have any side effect so far, but anyway a bug is a bug.  
Setting Damped light mode to ESC >1s caused an error message. (thanks Steffen!).

### Changes in 5.0:

A lot of minor improvements and clearance  
Motor Setup reference Values are now stored in an Ini-file; bound to the ESC Name.  
Start with work on internationalization.